

# Pocantico Hills Central School Existing Roof



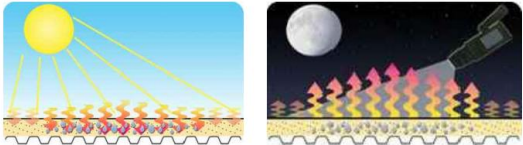
LEARNING • ACHIEVEMENT • GROWTH • DIRECTION



**BBS** ARCHITECTS  
LANDSCAPE ARCHITECTS  
ENGINEERS

# INFRARED ROOF SCAN

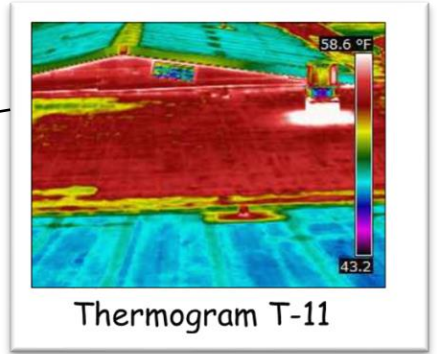
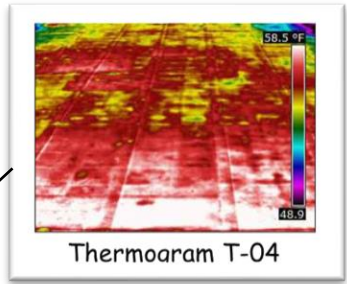
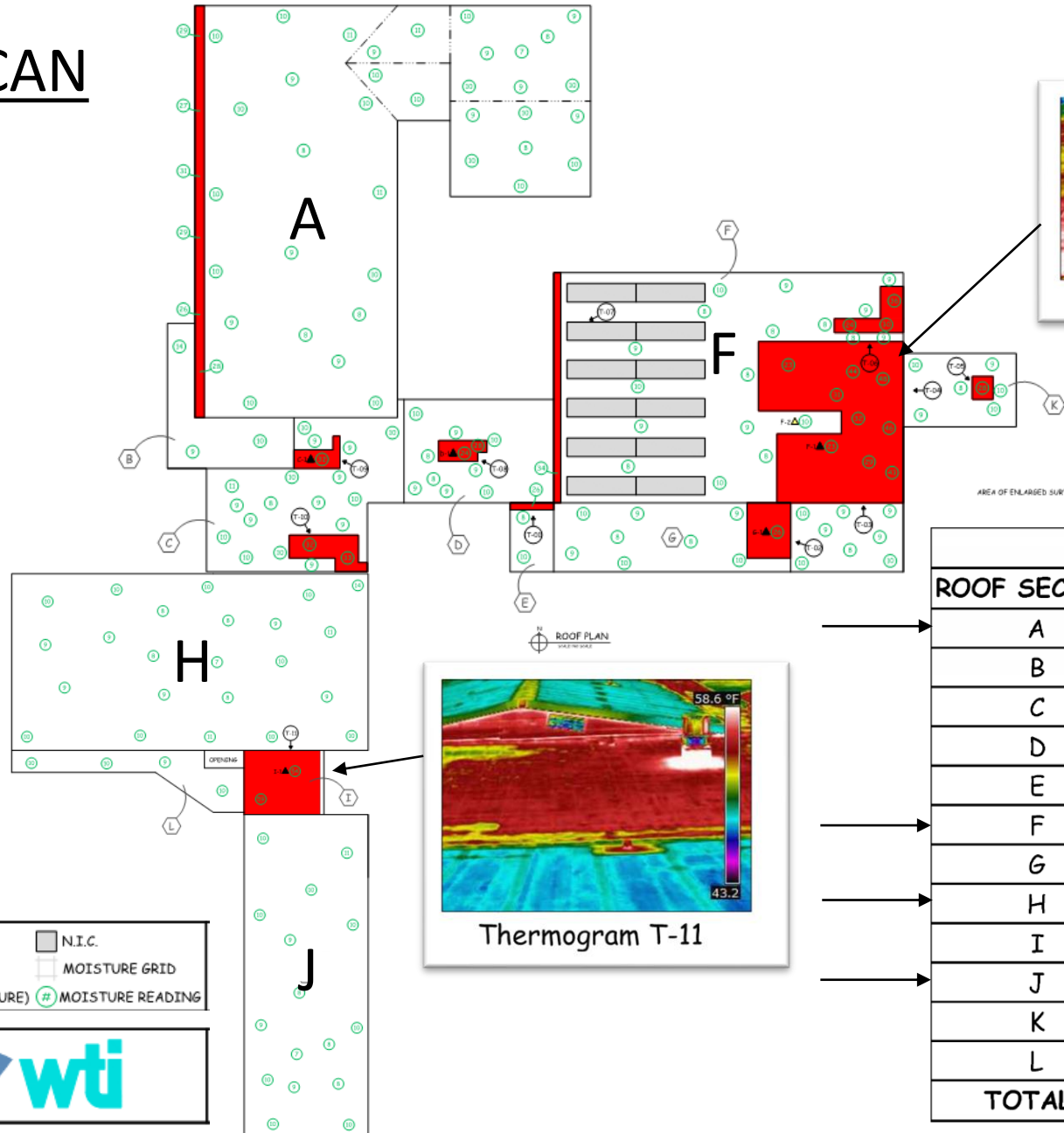
Performed 10/25/20



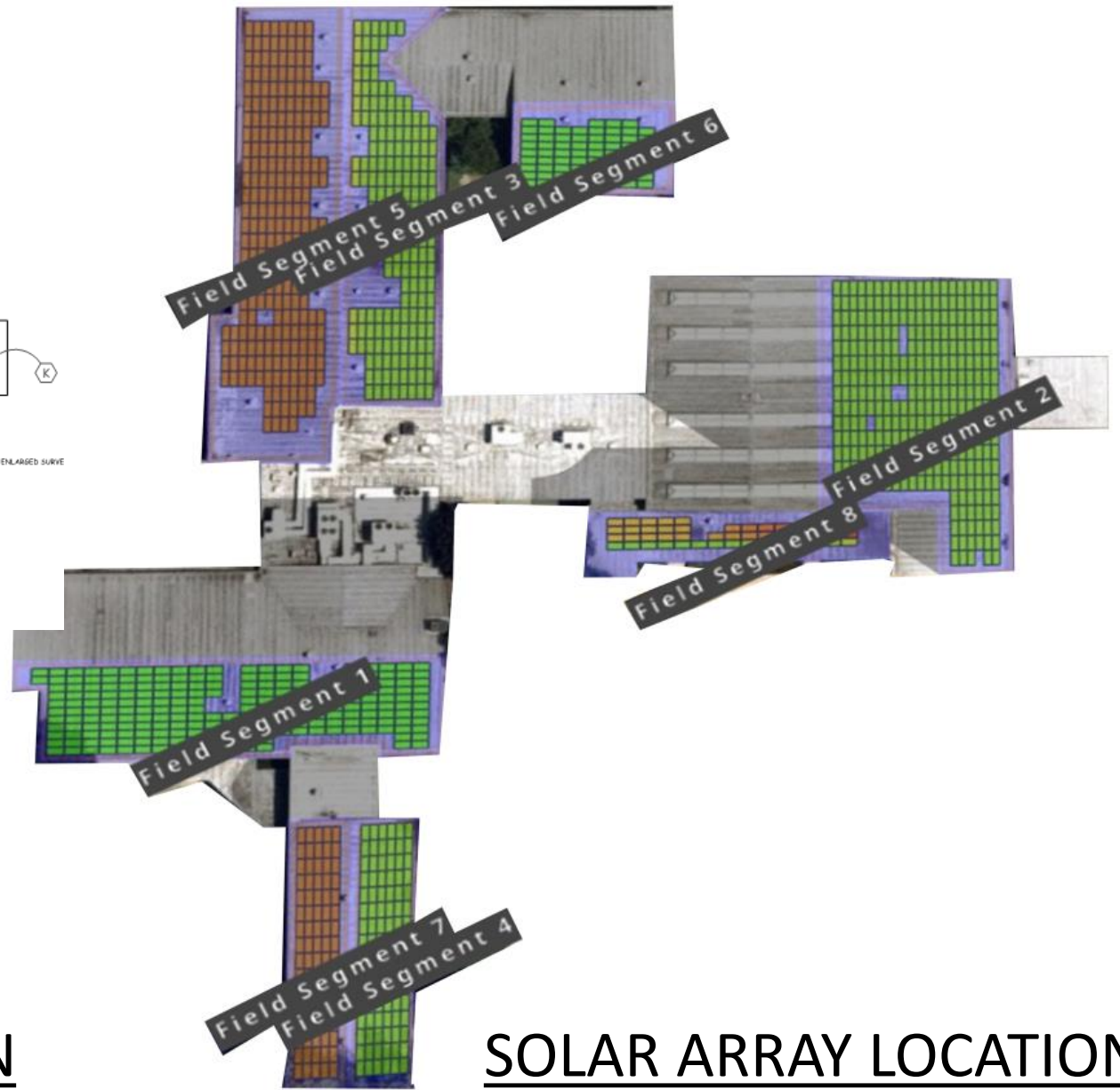
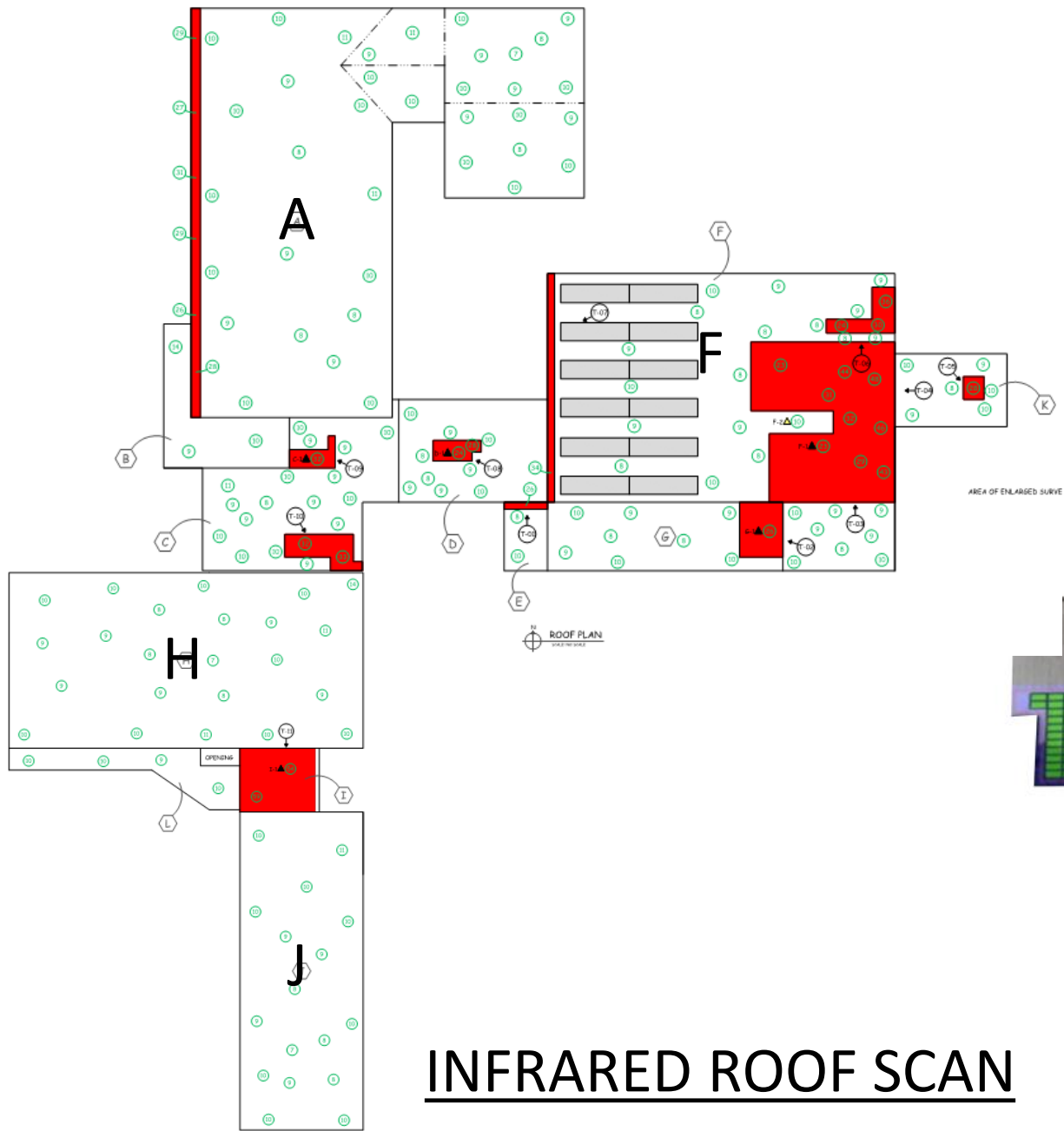
During the daytime, wet roof insulation absorbs more solar energy from the sun than dry roof insulation. During the nighttime, after the roof surface cools, the wet roof insulation will retain more solar energy than dry insulation and these temperature differences are detected by the infrared camera.

The wet roof areas are marked on the roof surface with visible paint markings. The wet roof areas are verified through core cuts and/or a Roof Moisture Meter.

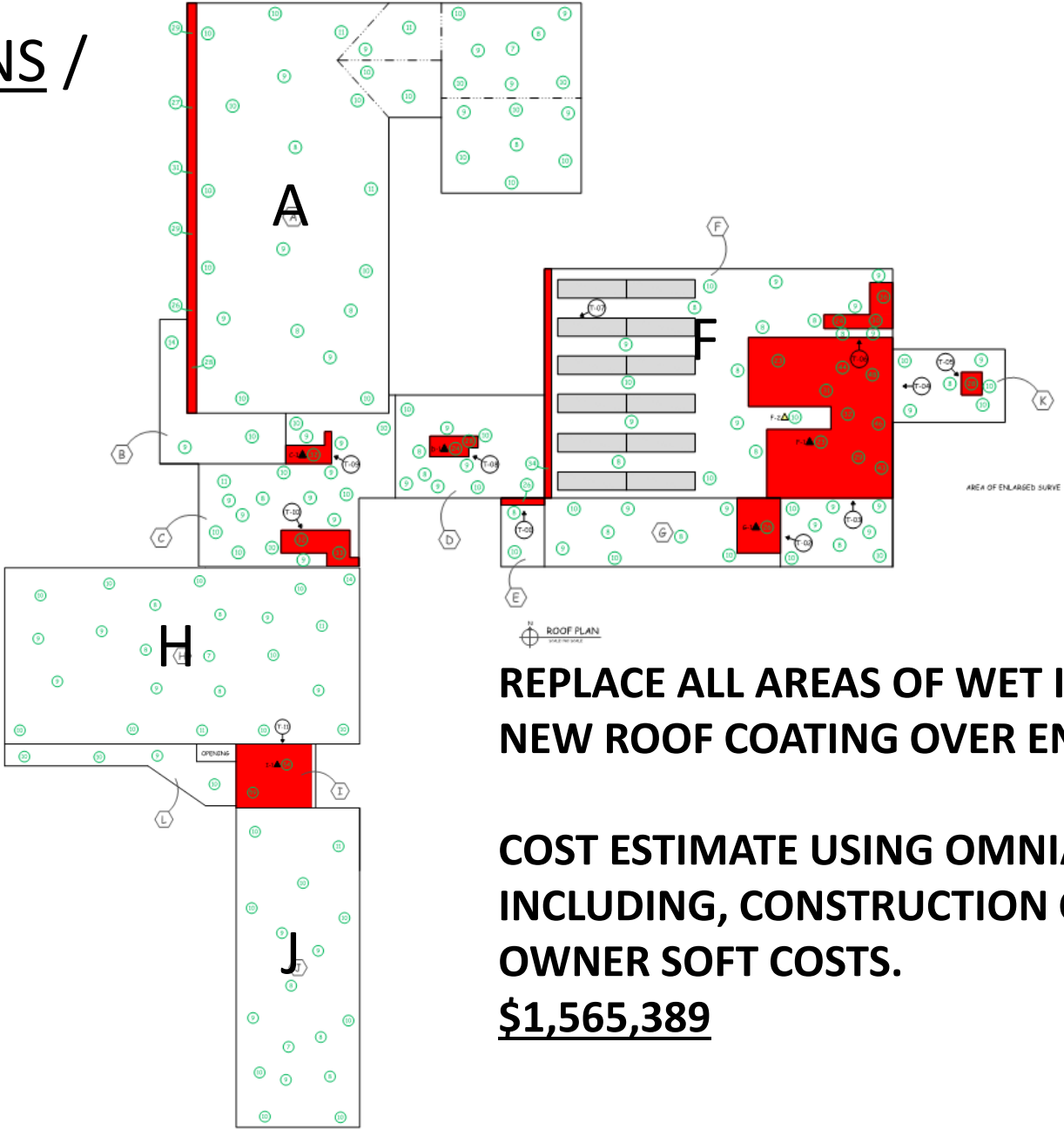
STANDARD KEY OF SYMBOLS			
<b>A</b> AREA DESIGNATION	<b>T-01</b> THERMOGRAM	<b>■</b> WET INSULATION	<b>■</b> N.I.C.
<b>▲</b> DRY CUT	<b>⊠</b> TRACE CORE	<b>⊠</b> MOISTURE GRID	
<b>▲</b> WET CUT	<b>P-01</b> PHOTOGRAPH	<b>⊠</b> R.I.M. (RANDOM INTERMITTENT MOISTURE)	<b>#</b> MOISTURE READING



ROOF AREA DATA			
ROOF SECTION	SIZE (S.F.)	WET (S.F.)	% WET
A	21,965	716	3.26%
B	1,702	0	0.00%
C	4,465	554	12.41%
D	2,930	173	5.90%
E	570	57	10.00%
F	16,667	4,430	26.58%
G	3,093	456	14.74%
H	12,880	0	0.00%
I	1,044	986	94.44%
J	8,120	0	0.00%
K	1,568	90	5.74%
L	1,392	0	0.00%
<b>TOTALS</b>	<b>76,396</b>	<b>7,462</b>	<b>9.77%</b>



# RECOMMENDATIONS / ESTIMATES



**REPLACE ALL AREAS OF WET INSULATION AND PROVIDE NEW ROOF COATING OVER ENTIRE ROOF.**

**COST ESTIMATE USING OMNIA COOPERATIVE PRICING. INCLUDING, CONSTRUCTION CONTINGENCIES, A/E FEES, OWNER SOFT COSTS.**

**\$1,565,389**